

Hampshire Water Transfer and Water Recycling Project

Design Approach Document – 3 of 3 documents

VOLUME NUMBER: 5

PLANNING INSPECTORATE SCHEME NUMBER: WA010002

APPLICATION DOCUMENT REFERENCE: 5.12

APFP REGULATION: 5(2)(q)

May 2026

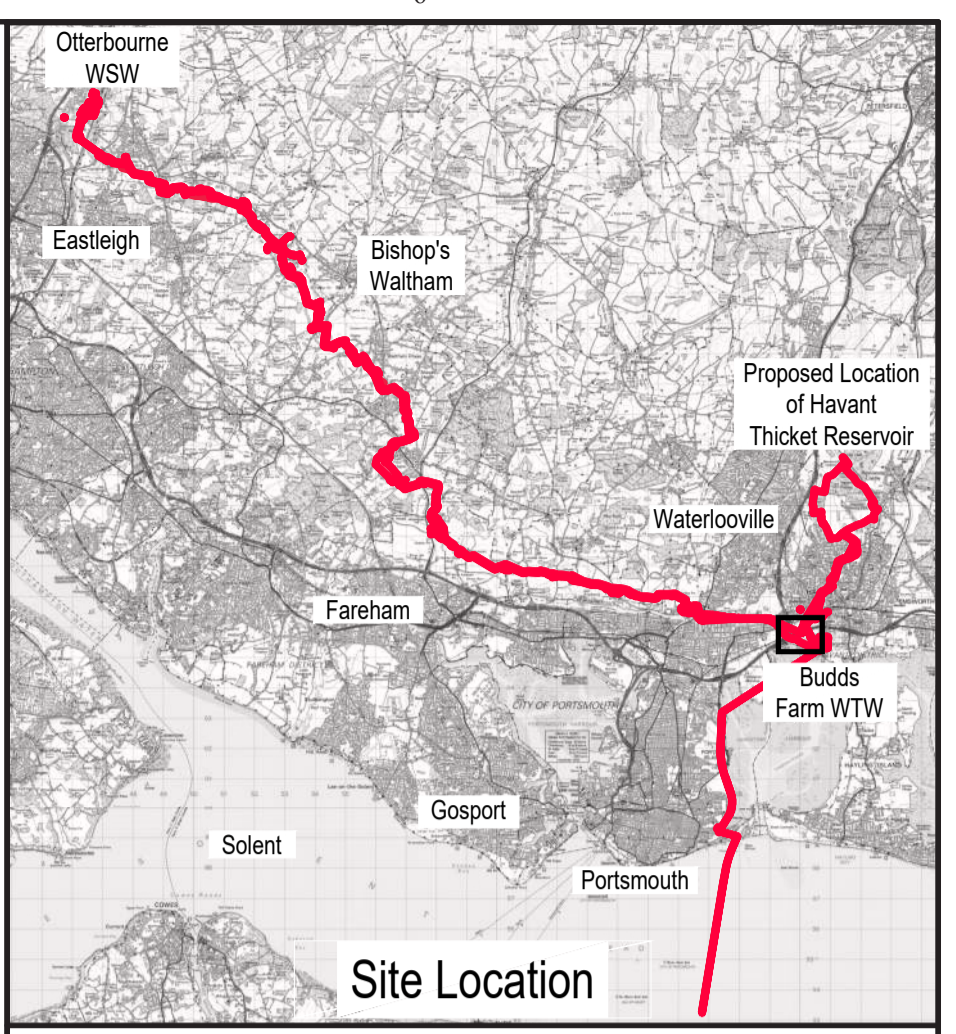
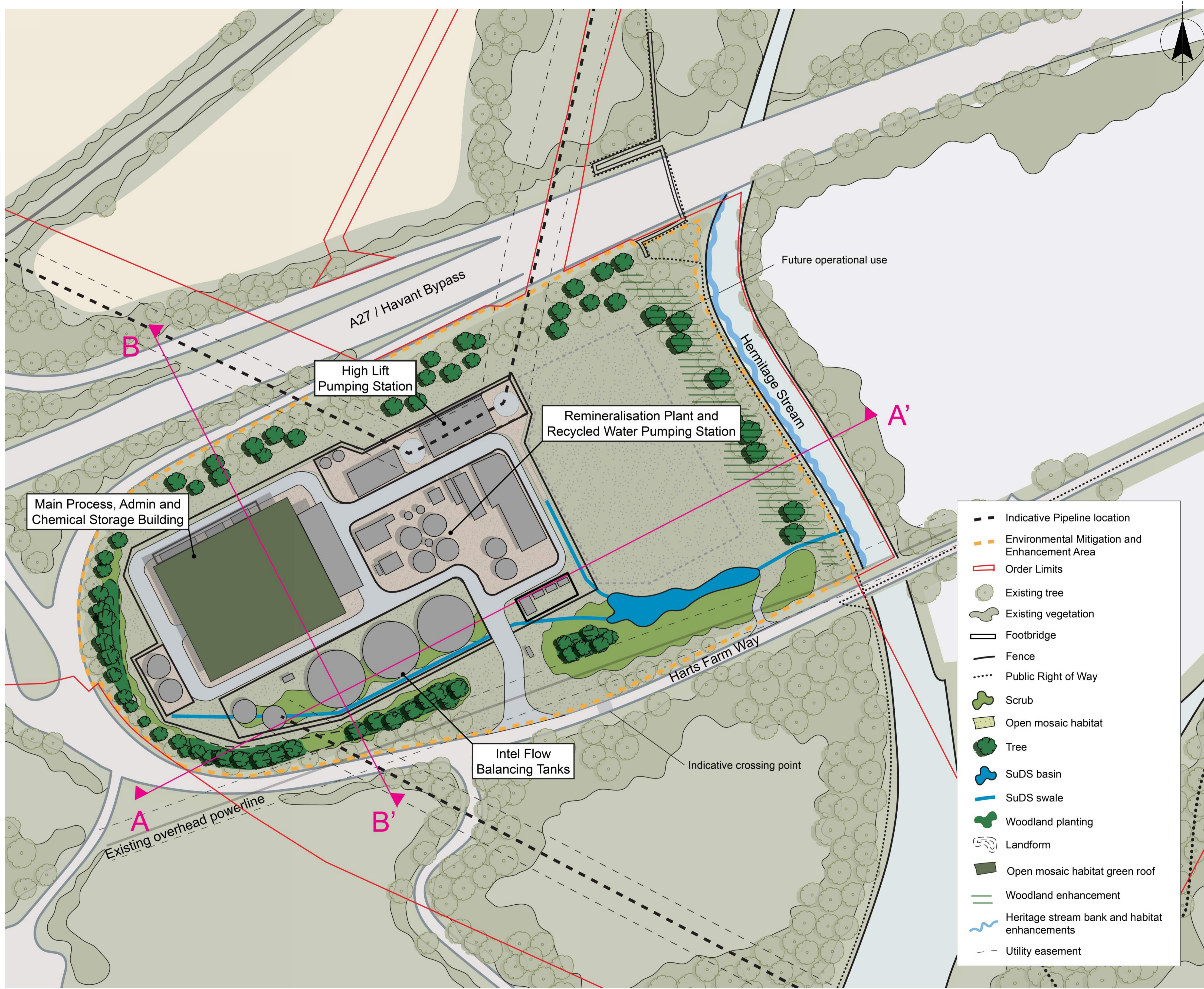
Version 0



from
**Southern
Water.** 

The Southern Water logo graphic consists of three stylized, wavy blue lines of varying lengths, positioned to the right of the text 'Southern Water'.

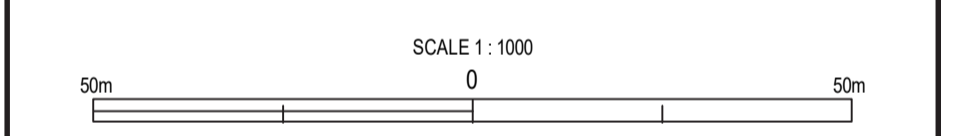
Appendix C Indicative Environmental Masterplan (Part 2)



Site Location
SCALE 1 : 250,000

NOTES

- This drawing should be read in conjunction with:
 - Works Plans (Document reference 2.3, DCO Volume 2)
 - Design Principles Document (Document reference 5.11, DCO Volume 5)
 - Outline Landscape and Ecology Management Plan (Document reference 7.5, DCO Volume 7)



DATE	ORIG	CHKD	REVD	APPR	REV	STS	REASON FOR ISSUE
01/05/26					P01.5		Draft 5 issue
31/03/26					P01.4		Draft 4 issue
04/11/25					P01.3		Draft 3 issue
15/07/25					P01.2		Draft 2 issue
14/04/25					P01.1		Draft 1 issue

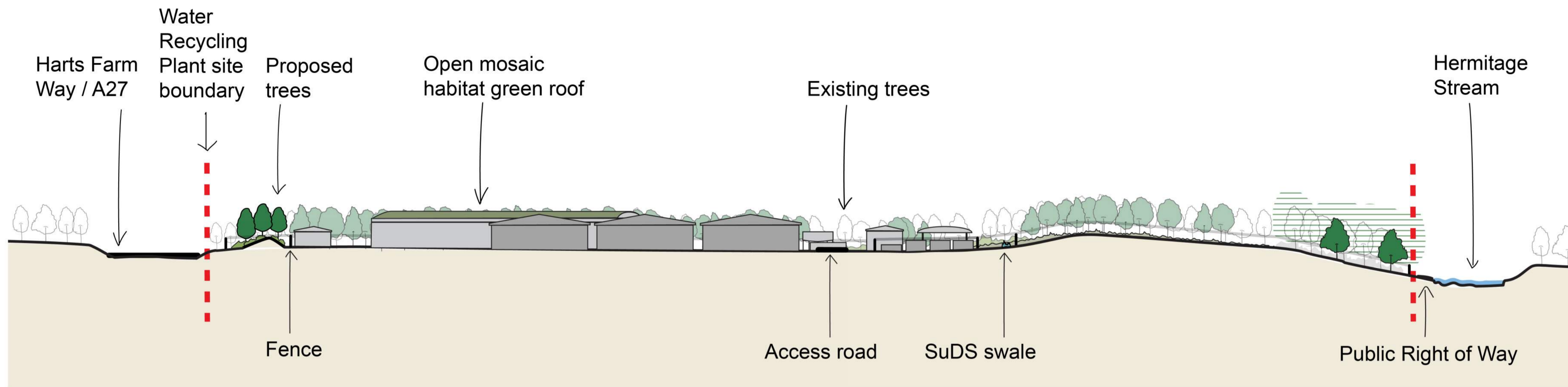
THIS DRAWING IS ISSUED BY SOUTHERN WATER SUBJECT TO THE CONDITIONS THAT IT IS NOT COPIED EITHER IN WHOLE OR IN PART OR DISCLOSED TO THIRD PARTIES UNLESS PRIOR WRITTEN AUTHORISATION IS GIVEN BY SOUTHERN WATER. PREVIOUS VERSIONS OF THIS DRAWING SHOULD BE STAMPED SUPERSEDED OR DESTROYED. DO NOT SCALE THIS DRAWING - IF IN DOUBT ASK

PROJECT TITLE
HAMPSHIRE WATER TRANSFER AND WATER RECYCLING PROJECT

DRAWING TITLE
INDICATIVE ENVIRONMENTAL MASTERPLAN
FIGURE 3 - INDICATIVE ABOVE GROUND PLANT
LANDSCAPE PLANS
WATER RECYCLING PLANT SITE - PLAN
SHEET 1 OF 2

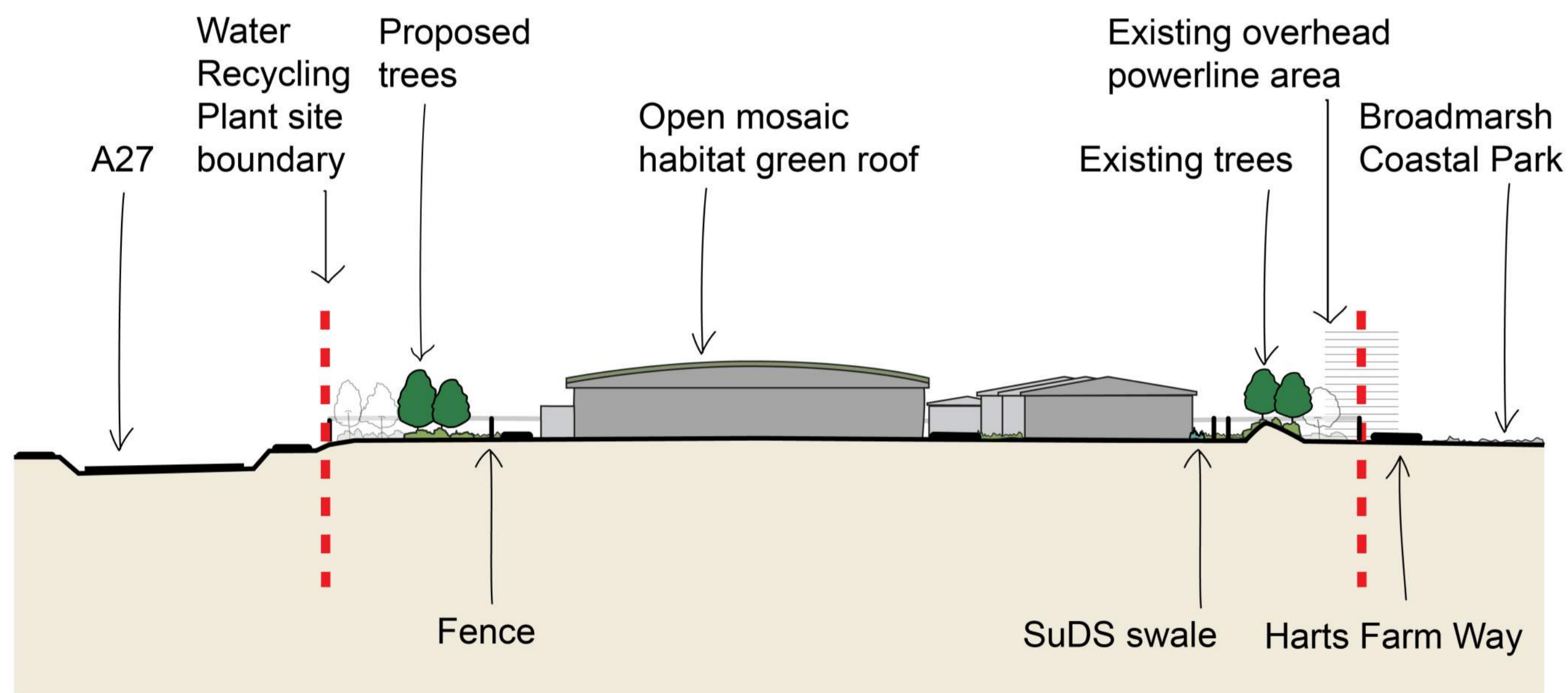
SITE UNIT MEMORIC	SITE UNIT NO.	MASTER SIZE
PRN	SCALE	STATUS
S.W. DRAWING NO.		REVISION
710166	1:1000	A1
		P01.5

- Indicative Pipeline location
- Environmental Mitigation and Enhancement Area
- Order Limits
- Existing tree
- Existing vegetation
- Footbridge
- Fence
- Public Right of Way
- Scrub
- Open mosaic habitat
- Tree
- SuDS basin
- SuDS swale
- Woodland planting
- Landform
- Open mosaic habitat green roof
- Woodland enhancement
- Heritage stream bank and habitat enhancements
- Utility easement



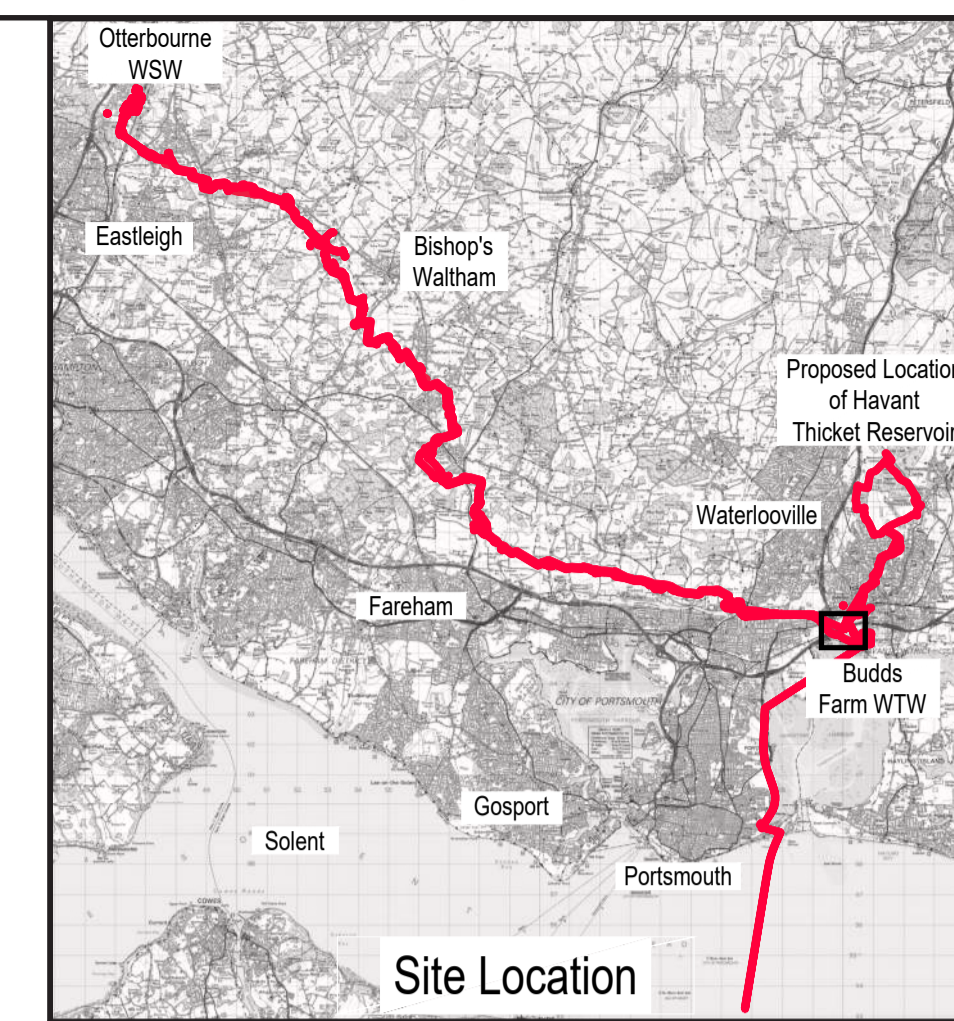
A

A'



B

B'



SCALE 1 : 250,000

NOTES

- This drawing should be read in conjunction with:
 - Works Plans (Document reference 2.3, DCO Volume 2)
 - Design Principles Document (Document reference 5.11, DCO Volume 5)
 - Outline Landscape and Ecology Management Plan (Document reference 7.5, DCO Volume 7)

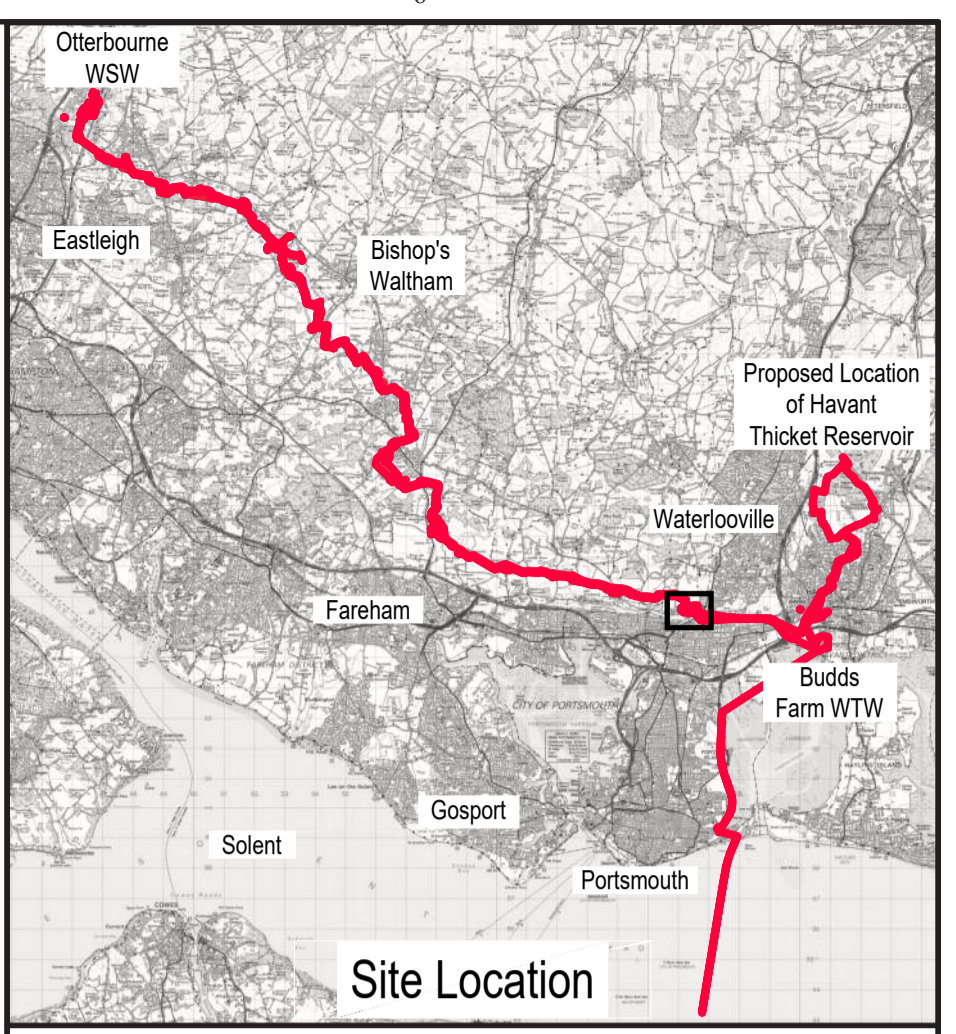
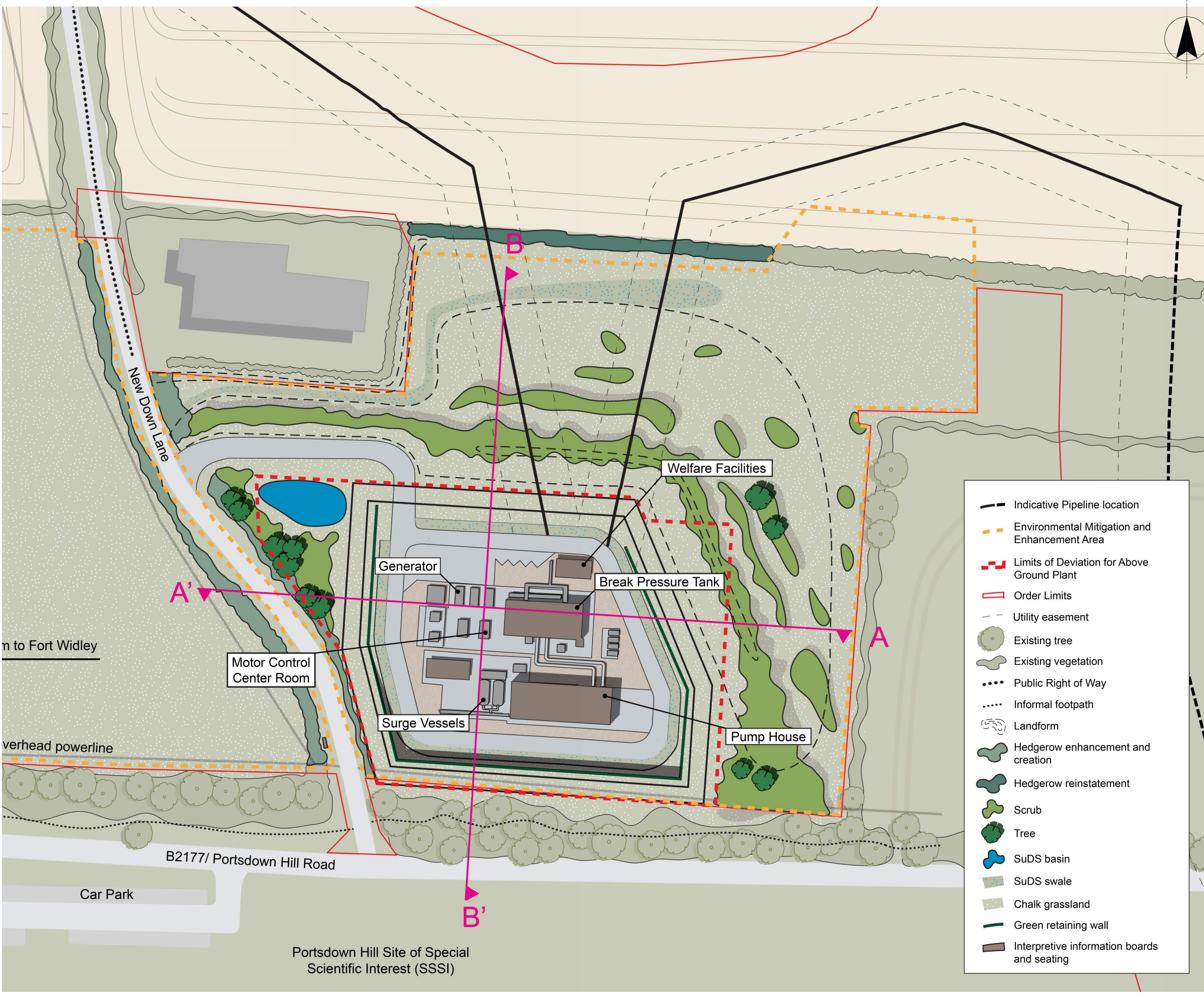
SCALE 1 : 1000
50m 0 50m

DATE	ORIG	CHKD	REVD	APPR	REV	STS	REASON FOR ISSUE
01/05/26					P01.5		Draft 5 issue
31/03/26					P01.4		Draft 4 issue
04/11/25					P01.3		Draft 3 issue
15/07/25					P01.2		Draft 2 issue
14/04/25					P01.1		Draft 1 issue

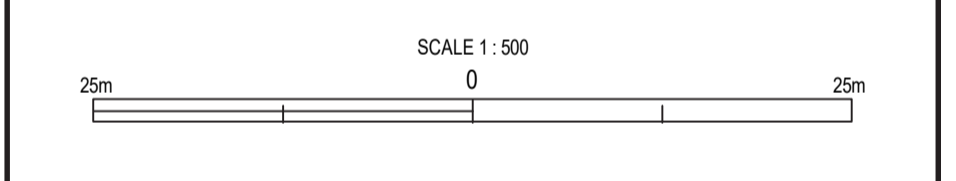
THIS DRAWING IS ISSUED BY SOUTHERN WATER SUBJECT TO THE CONDITIONS THAT IT IS NOT COPIED EITHER IN WHOLE OR IN PART OR DISCLOSED TO THIRD PARTIES UNLESS PRIOR WRITTEN AUTHORISATION IS GIVEN BY SOUTHERN WATER. PREVIOUS VERSIONS OF THIS DRAWING SHOULD BE STAMPED SUPERSEDED OR DESTROYED. DO NOT SCALE THIS DRAWING - IF IN DOUBT ASK



PROJECT TITLE HAMPSHIRE WATER TRANSFER AND WATER RECYCLING PROJECT		
DRAWING TITLE INDICATIVE ENVIRONMENTAL MASTERPLAN FIGURE 3 - INDICATIVE ABOVE GROUND PLANT LANDSCAPE PLANS WATER RECYCLING PLANT SITE - ELEVATION SHEET 2 OF 2		
SITE UNIT MNEUMONIC	SITE UNIT NO.	MASTER SIZE A1
PRN 710166	SCALE 1:1000	STATUS
S.W. DRAWING NO.		REVISION P01.5



- NOTES**
- This drawing should be read in conjunction with:
 - Works Plans (Document reference 2.3, DCO Volume 2)
 - Design Principles Document (Document reference 5.11, DCO Volume 5)
 - Outline Landscape and Ecology Management Plan (Document reference 7.5, DCO Volume 7)



DATE	ORIG	CHKD	REVD	APPR	REV	STS	REASON FOR ISSUE
01/05/26					P01.5		Draft 5 issue
31/03/26					P01.4		Draft 4 issue
04/11/25					P01.3		Draft 3 issue
15/07/25					P01.2		Draft 2 issue
14/04/25					P01.1		Draft 1 issue

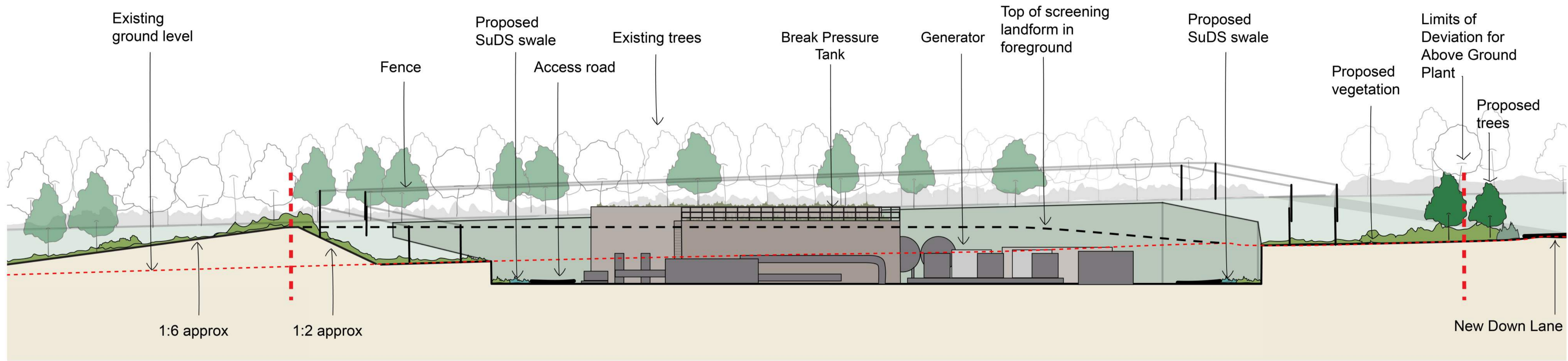
THIS DRAWING IS ISSUED BY SOUTHERN WATER SUBJECT TO THE CONDITIONS THAT IT IS NOT COPIED EITHER IN WHOLE OR IN PART OR DISCLOSED TO THIRD PARTIES UNLESS PRIOR WRITTEN AUTHORISATION IS GIVEN BY SOUTHERN WATER. PREVIOUS VERSIONS OF THIS DRAWING SHOULD BE STAMPED SUPERSEDED OR DESTROYED. DO NOT SCALE THIS DRAWING - IF IN DOUBT ASK.

PROJECT TITLE
HAMPSHIRE WATER TRANSFER AND WATER RECYCLING PROJECT

DRAWING TITLE
INDICATIVE ENVIRONMENTAL MASTERPLAN
FIGURE 3 - INDICATIVE ABOVE GROUND PLANT
LANDSCAPE PLANS
BREAK PRESSURE TANK AND INTERMEDIATE PUMPING STATION E - PLAN
SHEET 1 OF 2

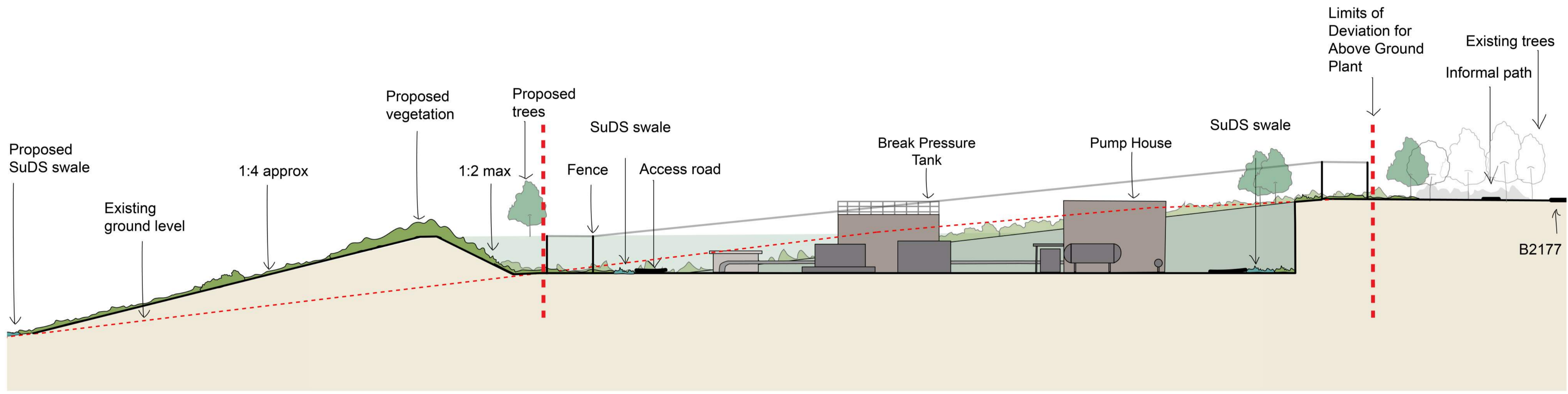
SITE UNIT MNEUMONIC	SITE UNIT NO.	MASTER SIZE
PRN	710166	A1
S.W. DRAWING NO.	SCALE	STATUS
	1:500	
		REVISION
		P01.5

- Indicative Pipeline location
- Environmental Mitigation and Enhancement Area
- Limits of Deviation for Above Ground Plant
- Order Limits
- Utility easement
- Existing tree
- Existing vegetation
- Public Right of Way
- Informal footpath
- Landform
- Hedgerow enhancement and creation
- Hedgerow reinstatement
- Scrub
- Tree
- SuDS basin
- SuDS swale
- Chalk grassland
- Green retaining wall
- Interpretive information boards and seating



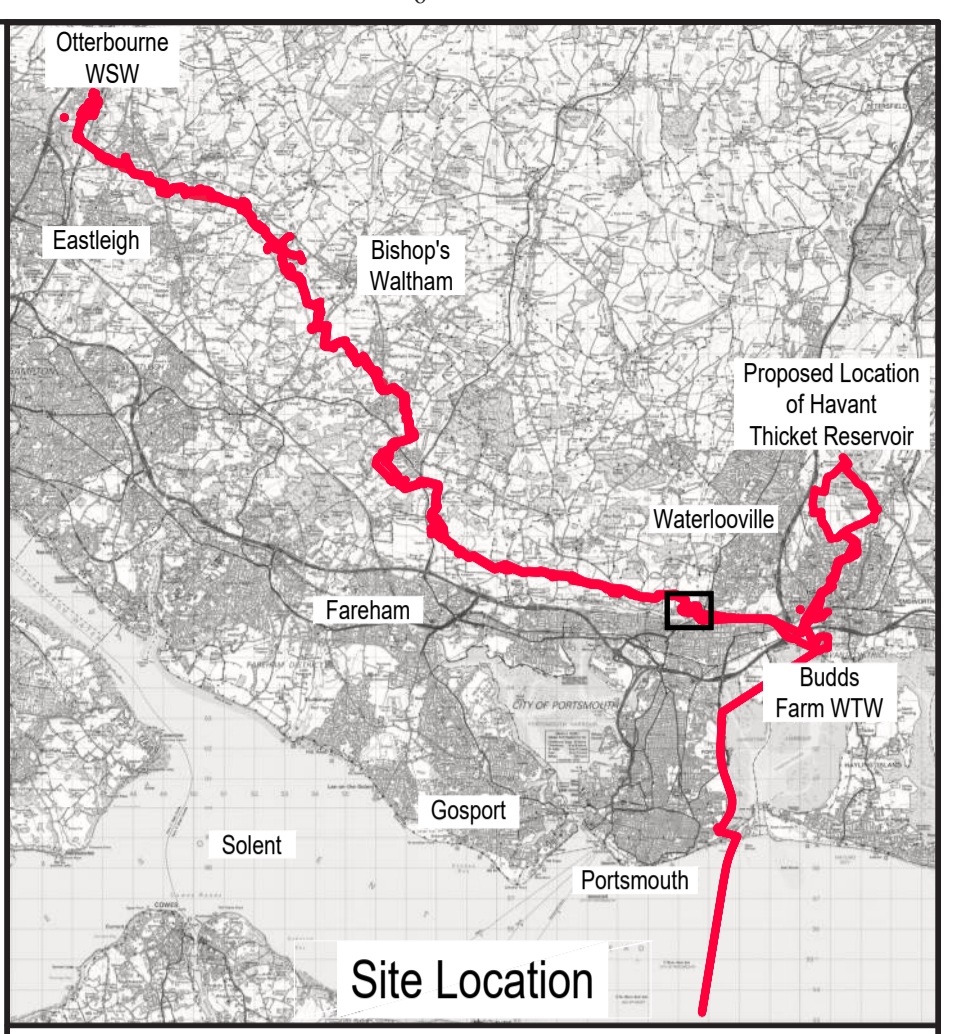
A

A'



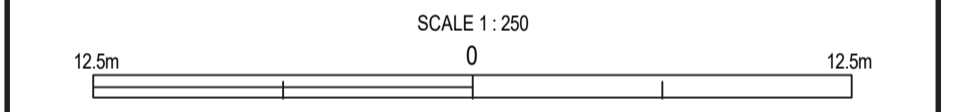
B

B'



Site Location
SCALE 1 : 250,000

- NOTES
- This drawing should be read in conjunction with:
 - Works Plans (Document reference 2.3, DCO Volume 2)
 - Design Principles Document (Document reference 5.11, DCO Volume 5)
 - Outline Landscape and Ecology Management Plan (Document reference 7.5, DCO Volume 7)



DATE	ORIG	CHKD	REVD	APPR	REV	STS	REASON FOR ISSUE
01/05/26					P01.5		Draft 5 issue
31/03/26					P01.4		Draft 4 issue
04/11/25					P01.3		Draft 3 issue
15/07/25					P01.2		Draft 2 issue
14/04/25					P01.1		Draft 1 issue

THIS DRAWING IS ISSUED BY SOUTHERN WATER SUBJECT TO THE CONDITIONS THAT IT IS NOT COPIED EITHER IN WHOLE OR IN PART OR DISCLOSED TO THIRD PARTIES UNLESS PRIOR WRITTEN AUTHORISATION IS GIVEN BY SOUTHERN WATER. PREVIOUS VERSIONS OF THIS DRAWING SHOULD BE STAMPED SUPERSEDED OR DESTROYED. DO NOT SCALE THIS DRAWING - IF IN DOUBT ASK

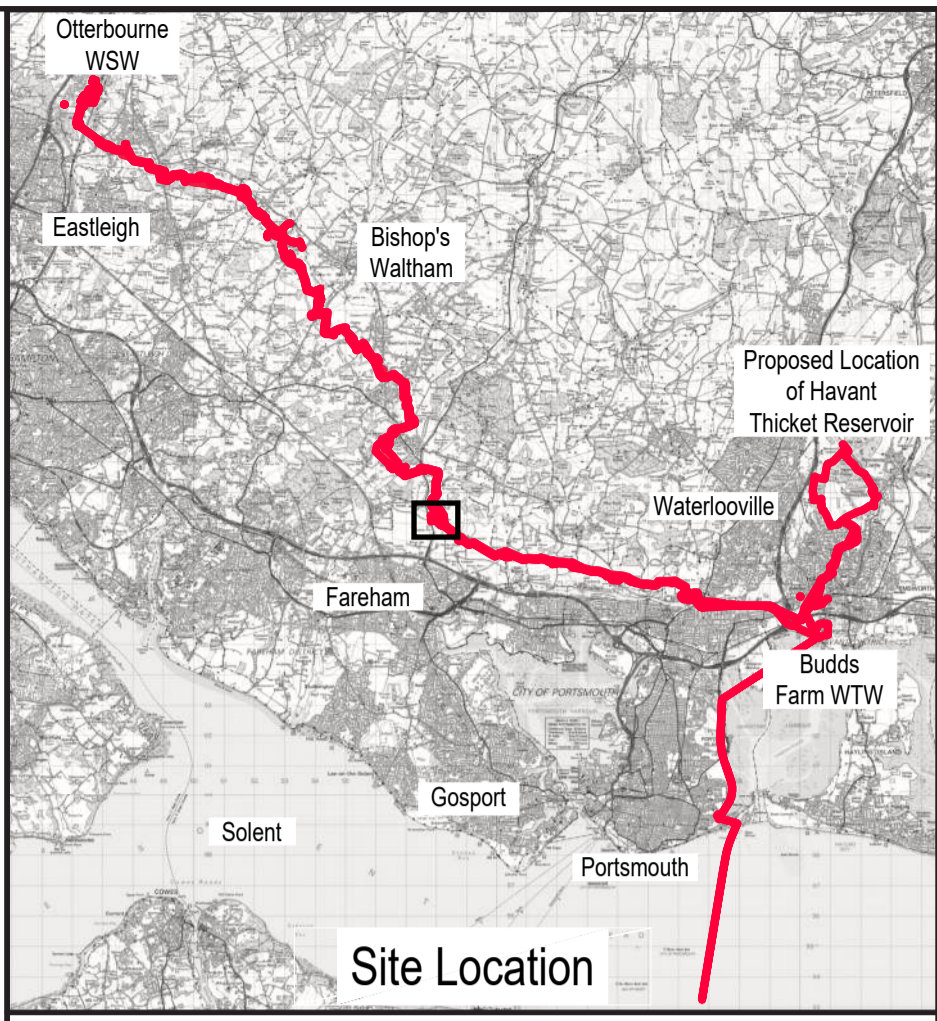
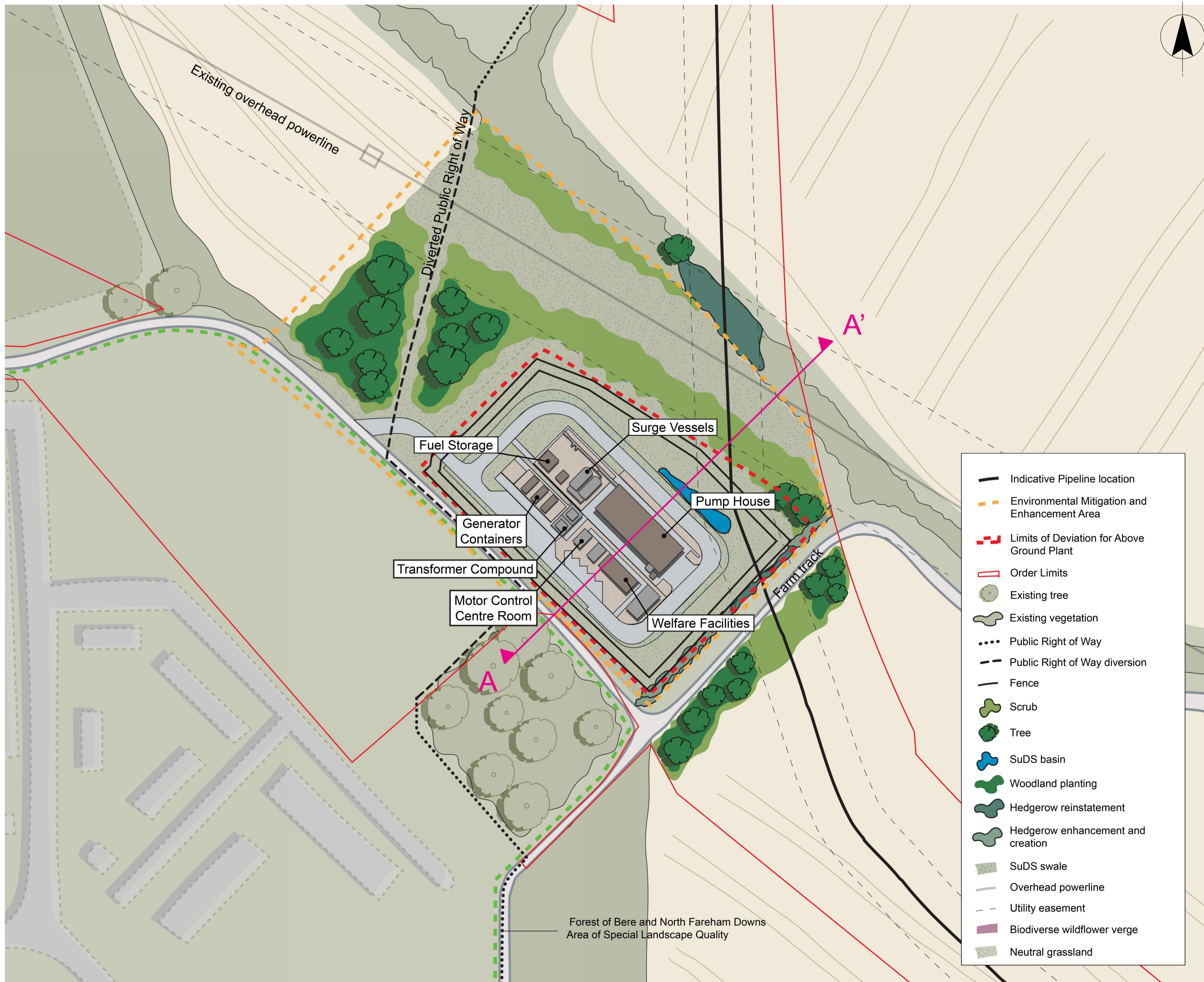
Southern House
Yeoman Road
Worthing
West Sussex
BN13 3NK
Telephone: (01903) 264444
fax: (01903) 691435

PROJECT TITLE
HAMPSHIRE WATER TRANSFER AND WATER RECYCLING PROJECT

DRAWING TITLE
**INDICATIVE ENVIRONMENTAL MASTERPLAN
FIGURE 3 - INDICATIVE ABOVE GROUND PLANT
LANDSCAPE PLANS**

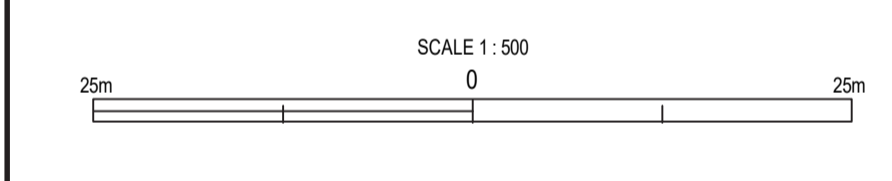
**BREAK PRESSURE TANK AND INTERMEDIATE
PUMPING STATION E - ELEVATION
SHEET 2 OF 2**

SITE UNIT MNEMONIC	SITE UNIT NO.	MASTER SIZE
PRN	SCALE	STATUS
S.W. DRAWING NO.	REVISION	
710166	1:250	A1
		P01.5



- NOTES**
- This drawing should be read in conjunction with:
 - Works Plans (Document reference 2.3, DCO Volume 2)
 - Design Principles Document (Document reference 5.11, DCO Volume 5)
 - Outline Landscape and Ecology Management Plan (Document reference 7.5, DCO Volume 7)

- Indicative Pipeline location
- Environmental Mitigation and Enhancement Area
- Limits of Deviation for Above Ground Plant
- Order Limits
- Existing tree
- Existing vegetation
- Public Right of Way
- Public Right of Way diversion
- Fence
- Scrub
- Tree
- SuDS basin
- Woodland planting
- Hedgerow reinstatement
- Hedgerow enhancement and creation
- SuDS swale
- Overhead powerline
- Utility easement
- Biodiverse wildflower verge
- Neutral grassland



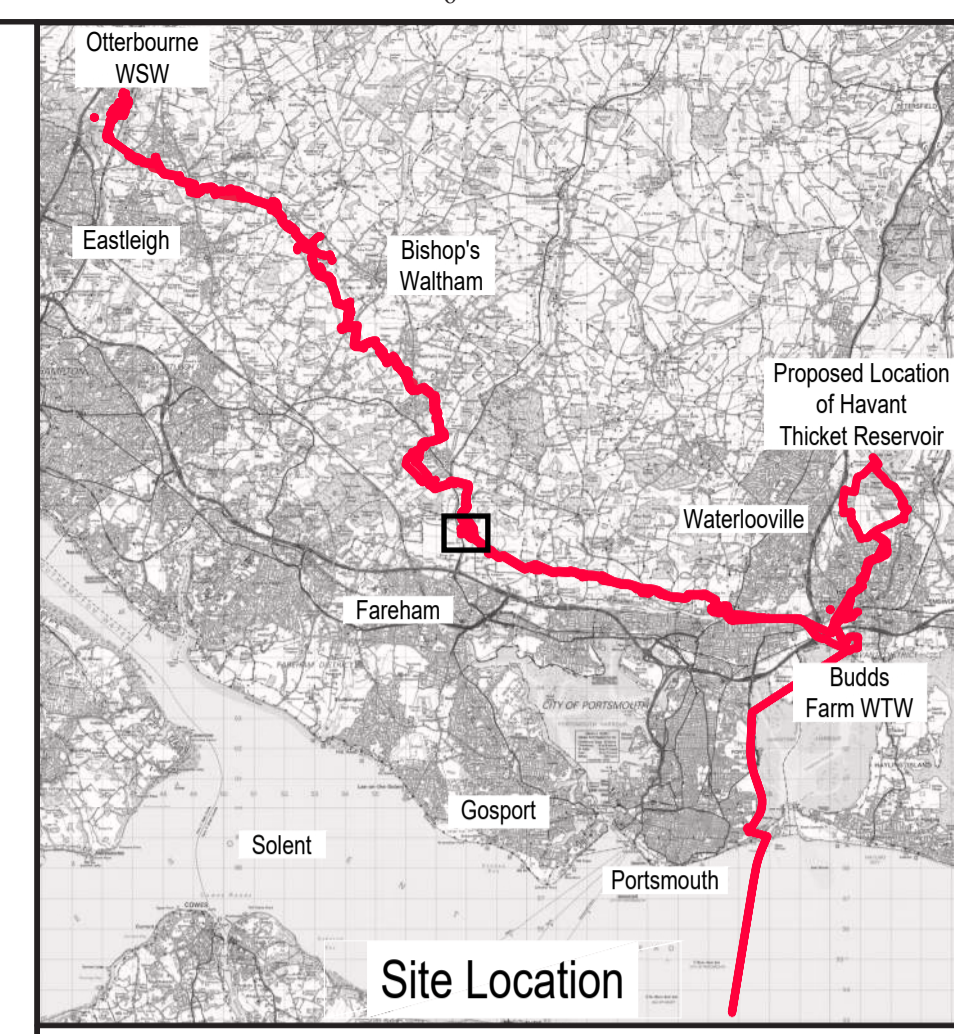
DATE	ORIG	CHKD	REVD	APPR	REV	STS	REASON FOR ISSUE
01/05/26					P01.5		Draft 5 issue
31/03/26					P01.4		Draft 4 issue
04/11/25					P01.3		Draft 3 issue
15/07/25					P01.2		Draft 2 issue
14/04/25					P01.1		Draft 1 issue

THIS DRAWING IS ISSUED BY SOUTHERN WATER SUBJECT TO THE CONDITIONS THAT IT IS NOT COPIED EITHER IN WHOLE OR IN PART OR DISCLOSED TO THIRD PARTIES UNLESS PRIOR WRITTEN AUTHORISATION IS GIVEN BY SOUTHERN WATER. PREVIOUS VERSIONS OF THIS DRAWING SHOULD BE STAMPED SUPERSEDED OR DESTROYED. DO NOT SCALE THIS DRAWING - IF IN DOUBT ASK.

PROJECT TITLE: HAMPSHIRE WATER TRANSFER AND WATER RECYCLING PROJECT

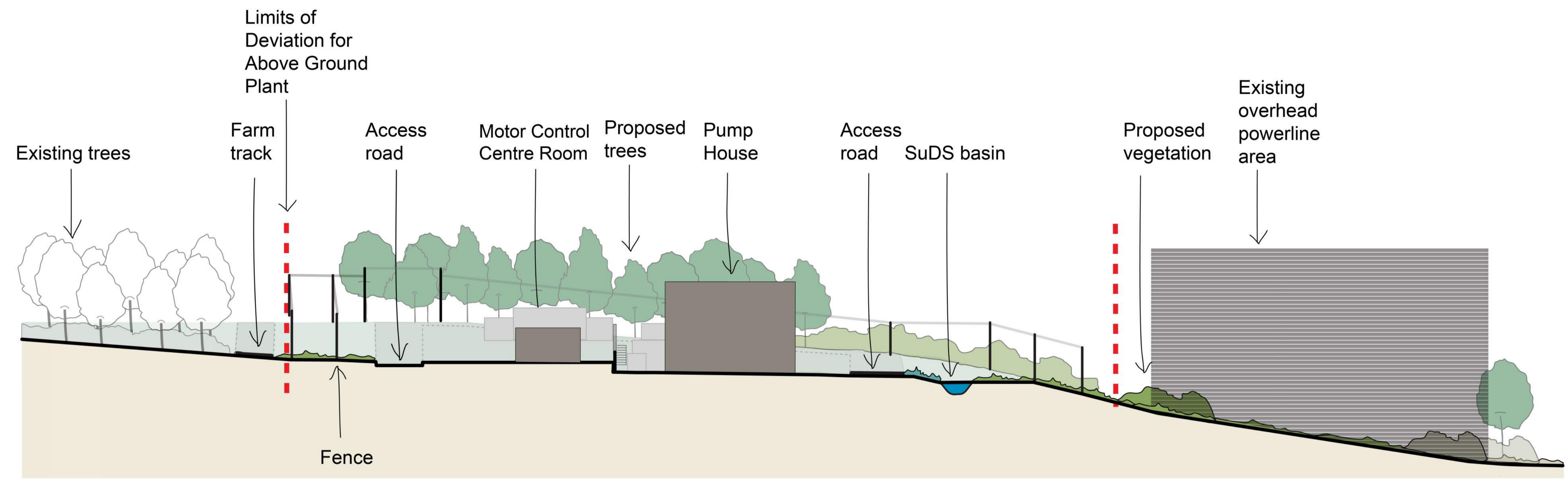
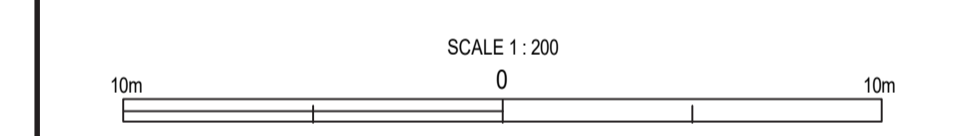
DRAWING TITLE: INDICATIVE ENVIRONMENTAL MASTERPLAN FIGURE 3 - INDICATIVE ABOVE GROUND PLANT LANDSCAPE PLANS
INTERMEDIATE PUMPING STATION F - PLAN SHEET 1 OF 2

SITE UNIT MEMORIC	SITE UNIT NO.	MASTER SIZE
PRN 710166	SCALE 1:500	A1
S.W. DRAWING NO.	REVISION	
	P01.5	



Site Location
SCALE 1 : 250,000

- NOTES
- This drawing should be read in conjunction with:
 - Works Plans (Document reference 2.3, DCO Volume 2)
 - Design Principles Document (Document reference 5.11, DCO Volume 5)
 - Outline Landscape and Ecology Management Plan (Document reference 7.5, DCO Volume 7)



A

A'

DATE	ORIG	CHKD	REVD	APPR	REV	STS	REASON FOR ISSUE
01/05/26					P01.5		Draft 5 issue
31/03/26					P01.4		Draft 4 issue
04/11/25					P01.3		Draft 3 issue
15/07/25					P01.2		Draft 2 issue
14/04/25	---	---	---	---	P01.1		Draft 1 issue

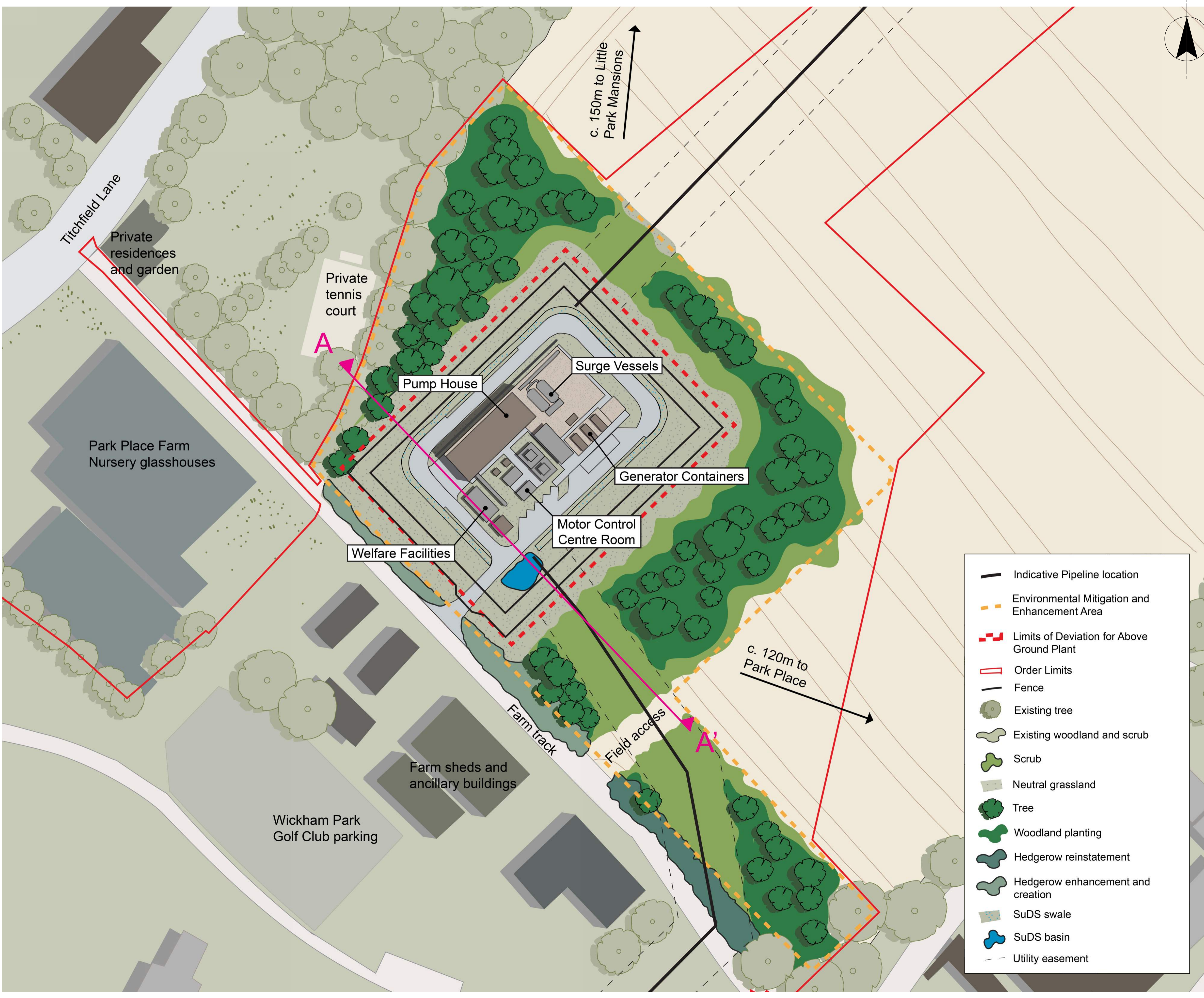
THIS DRAWING IS ISSUED BY SOUTHERN WATER SUBJECT TO THE CONDITIONS THAT IT IS NOT COPIED EITHER IN WHOLE OR IN PART OR DISCLOSED TO THIRD PARTIES UNLESS PRIOR WRITTEN AUTHORISATION IS GIVEN BY SOUTHERN WATER. PREVIOUS VERSIONS OF THIS DRAWING SHOULD BE STAMPED SUPERSEDED OR DESTROYED. DO NOT SCALE THIS DRAWING - IF IN DOUBT ASK

Southern House
Yeoman Road
Worthing
West Sussex
BN13 3NK
Telephone (01903) 264444
fax (01903) 691435

PROJECT TITLE
HAMPSHIRE WATER TRANSFER AND WATER RECYCLING PROJECT

DRAWING TITLE
**INDICATIVE ENVIRONMENTAL MASTERPLAN
FIGURE 3 - INDICATIVE ABOVE GROUND PLANT
LANDSCAPE PLANS
INTERMEDIATE PUMPING STATION F - ELEVATION
SHEET 2 OF 2**

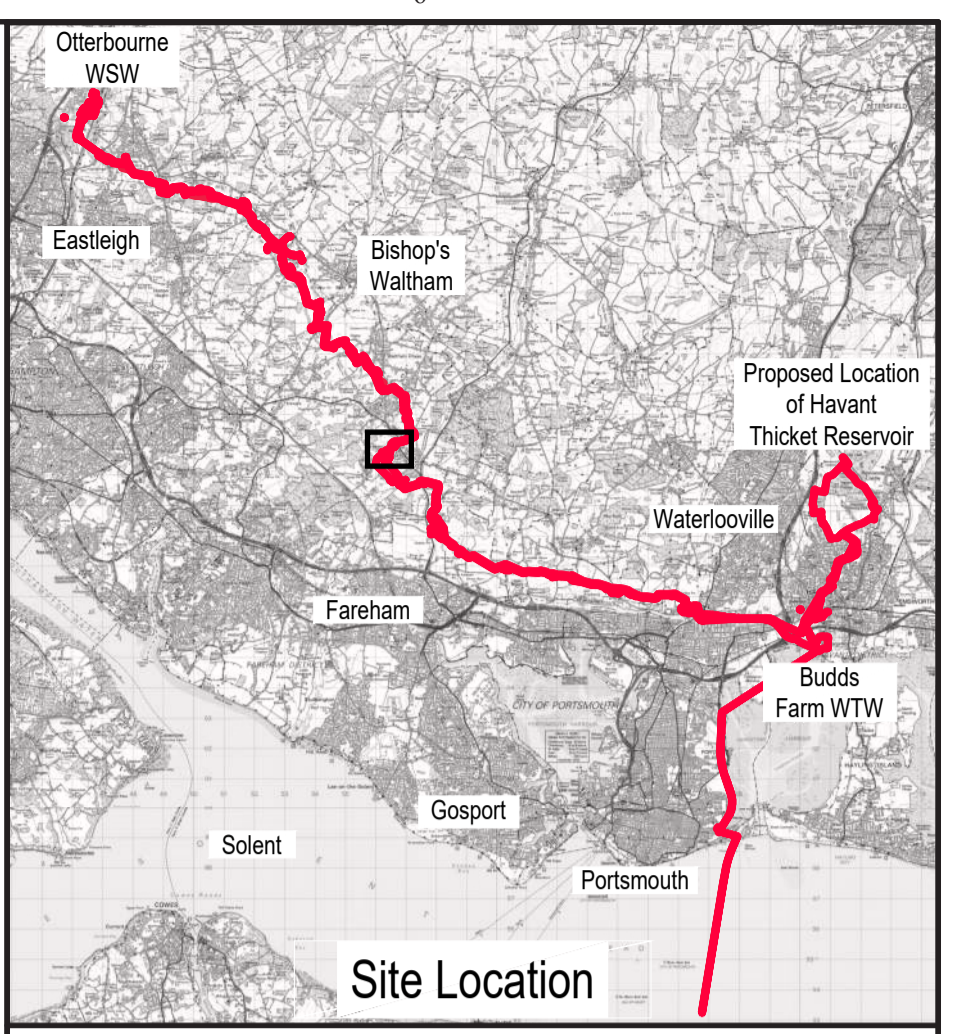
SITE UNIT MEMORIC	SITE UNIT NO.	MASTER SIZE
PRN	SCALE	STATUS
S.W. DRAWING NO.	REVISION	
	P01.5	



c. 150m to Little Park Mansions

c. 120m to Park Place

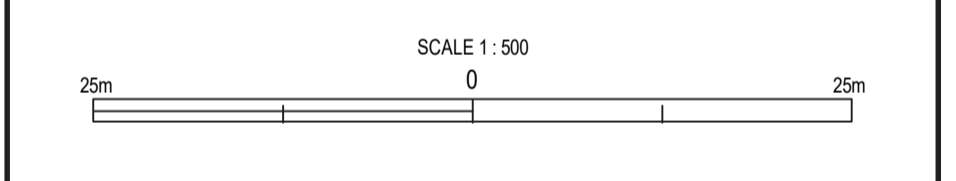
- Indicative Pipeline location
- Environmental Mitigation and Enhancement Area
- Limits of Deviation for Above Ground Plant
- Order Limits
- Fence
- Existing tree
- Existing woodland and scrub
- Scrub
- Neutral grassland
- Tree
- Woodland planting
- Hedgerow reinstatement
- Hedgerow enhancement and creation
- SuDS swale
- SuDS basin
- Utility easement



NOTES

1. This drawing should be read in conjunction with:

- Works Plans (Document reference 2.3, DCO Volume 2)
- Design Principles Document (Document reference 5.11, DCO Volume 5)
- Outline Landscape and Ecology Management Plan (Document reference 7.5, DCO Volume 7)



DATE	ORIG	CHKD	REVD	APPR	REV	STS	REASON FOR ISSUE
01/05/26					P01.5		Draft 5 issue
31/03/26					P01.4		Draft 4 issue
04/11/25					P01.3		Draft 3 issue
15/07/25					P01.2		Draft 2 issue
14/04/25					P01.1		Draft 1 issue

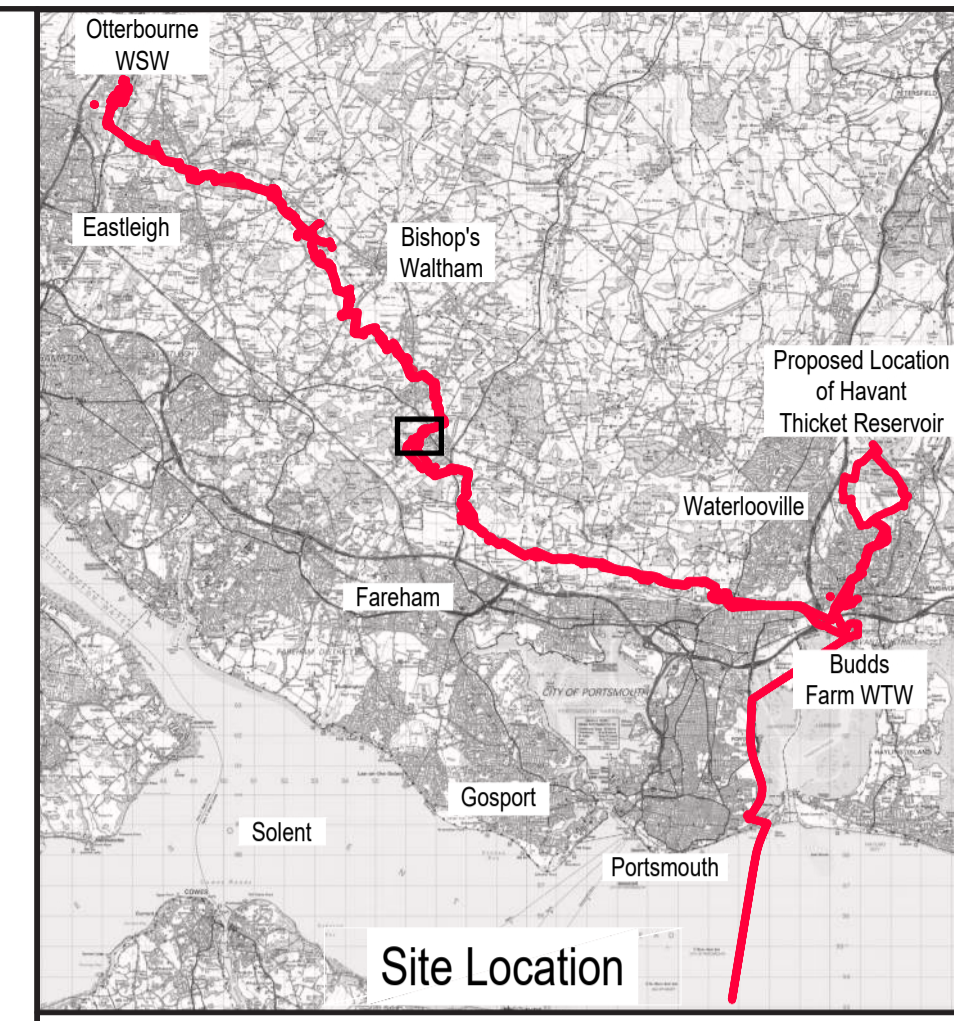
THIS DRAWING IS ISSUED BY SOUTHERN WATER SUBJECT TO THE CONDITIONS THAT IT IS NOT COPIED EITHER IN WHOLE OR IN PART OR DISCLOSED TO THIRD PARTIES UNLESS PRIOR WRITTEN AUTHORISATION IS GIVEN BY SOUTHERN WATER. PREVIOUS VERSIONS OF THIS DRAWING SHOULD BE STAMPED SUPERSEDED OR DESTROYED. DO NOT SCALE THIS DRAWING - IF IN DOUBT ASK.

Southern House
Yeoman Road
Worthing
West Sussex
BN13 3NK
Telephone: (01903) 264444
Fax: (01903) 691435

PROJECT TITLE
HAMPSHIRE WATER TRANSFER AND WATER RECYCLING PROJECT

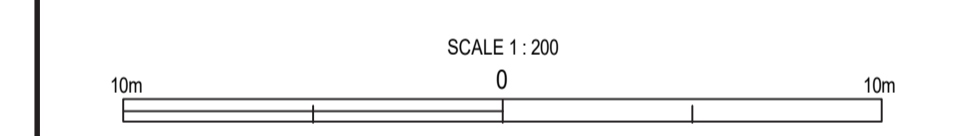
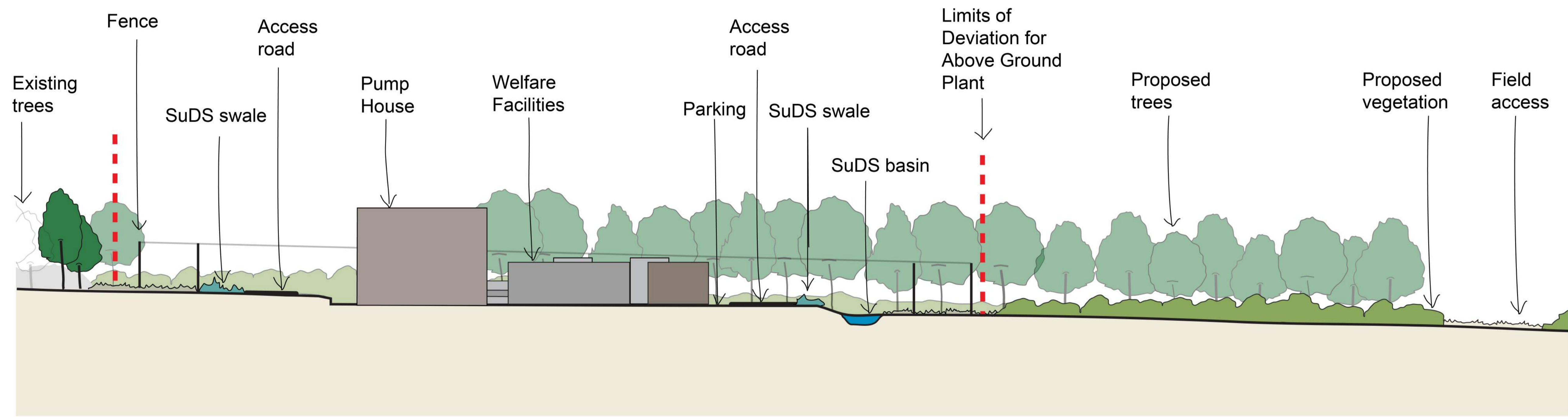
DRAWING TITLE
**INDICATIVE ENVIRONMENTAL MASTERPLAN
FIGURE 3 - INDICATIVE ABOVE GROUND PLANT
LANDSCAPE PLANS
INTERMEDIATE PUMPING STATION G - PLAN
SHEET 1 OF 2**

SITE UNIT MEMORIC	SITE UNIT NO.	MASTER SIZE
PRN 710166	SCALE 1:500	A1
S.W. DRAWING NO.	STATUS	REVISION
		P01.5



SCALE 1 : 250,000

- NOTES
- This drawing should be read in conjunction with:
 - Works Plans (Document reference 2.3, DCO Volume 2)
 - Design Principles Document (Document reference 5.11, DCO Volume 5)
 - Outline Landscape and Ecology Management Plan (Document reference 7.5, DCO Volume 7)



01/05/26					P01.5	Draft 5 issue
31/03/26					P01.4	Draft 4 issue
04/11/25					P01.3	Draft 3 issue
15/07/25					P01.2	Draft 2 issue
14/04/25	---	---	---	---	P01.1	Draft 1 issue
DATE	ORIG	CHKD	REVD	APPR	REV	REASON FOR ISSUE

THIS DRAWING IS ISSUED BY SOUTHERN WATER SUBJECT TO THE CONDITIONS THAT IT IS NOT COPIED EITHER IN WHOLE OR IN PART OR DISCLOSED TO THIRD PARTIES UNLESS PRIOR WRITTEN AUTHORISATION IS GIVEN BY SOUTHERN WATER. PREVIOUS VERSIONS OF THIS DRAWING SHOULD BE STAMPED SUPERSEDED OR DESTROYED. DO NOT SCALE THIS DRAWING - IF IN DOUBT ASK

Southern House
Yeoman Road
Worthing
West Sussex
BN13 3NK
Telephone (01903) 264444
fax (01903) 691435

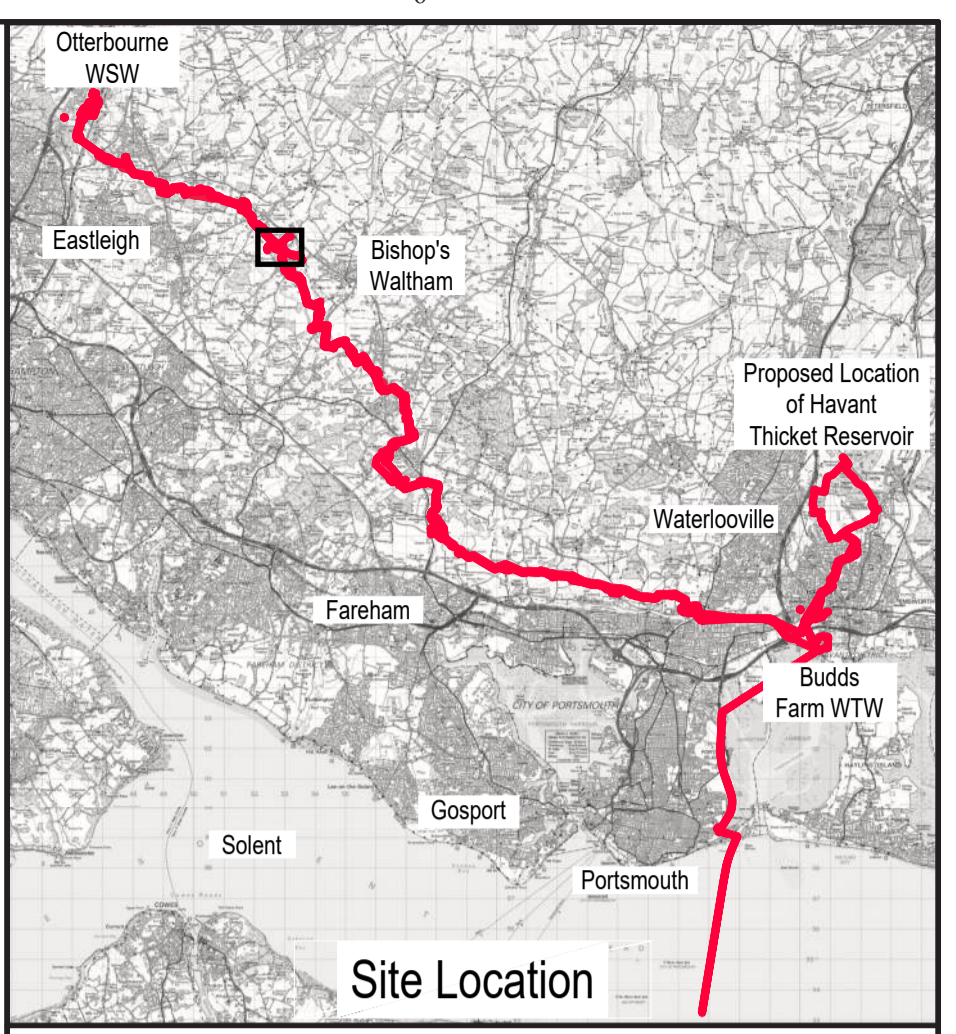
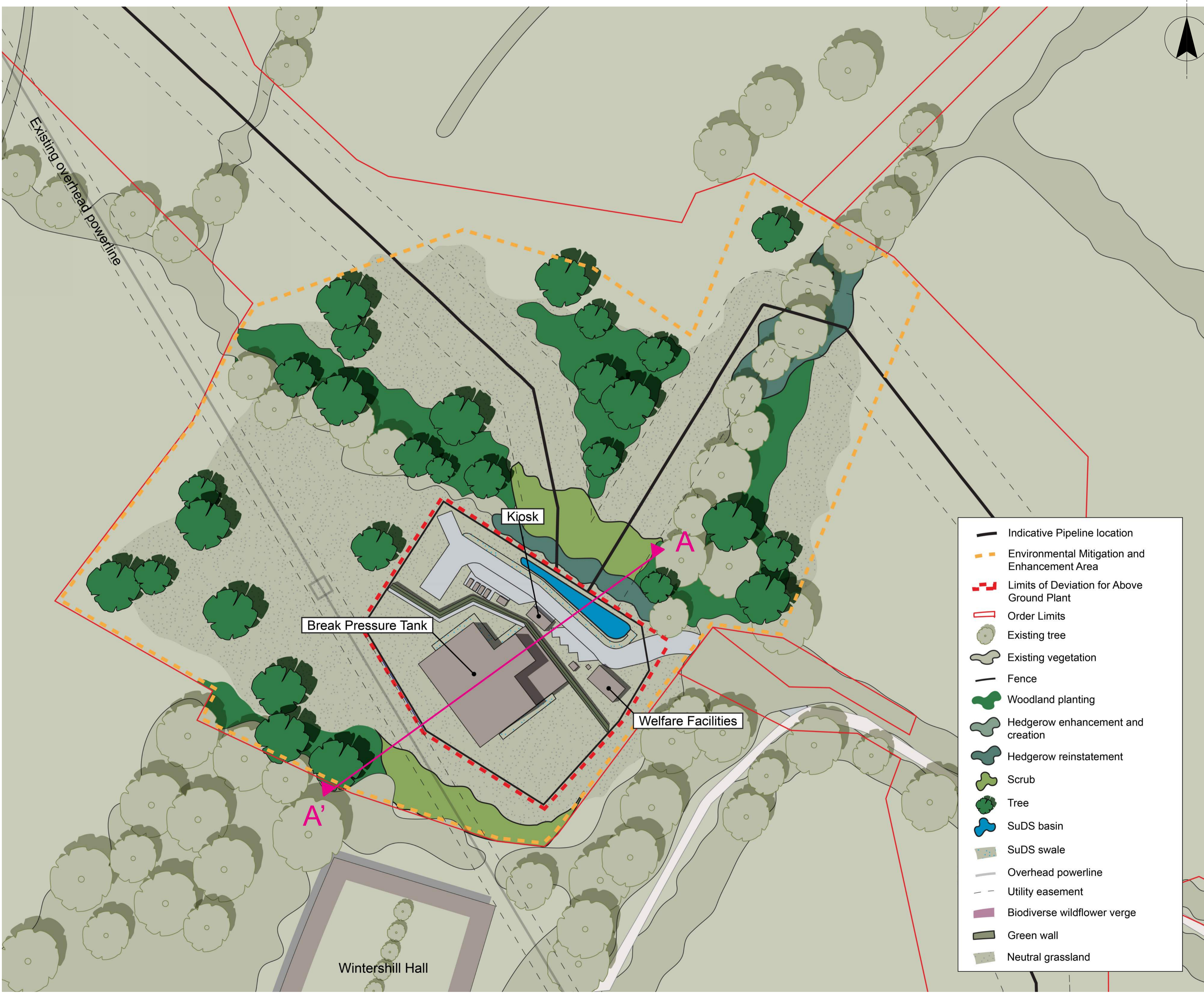
PROJECT TITLE
HAMPSHIRE WATER TRANSFER AND WATER RECYCLING PROJECT

DRAWING TITLE
**INDICATIVE ENVIRONMENTAL MASTERPLAN
FIGURE 3 - INDICATIVE ABOVE GROUND PLANT
LANDSCAPE PLANS**
**INTERMEDIATE PUMPING STATION G - ELEVATION
SHEET 2 OF 2**

SITE UNIT MNEMONIC	SITE UNIT NO.	MASTER SIZE
PRN	SCALE	STATUS
S.W. DRAWING NO.	REVISION	
	P01.5	

A

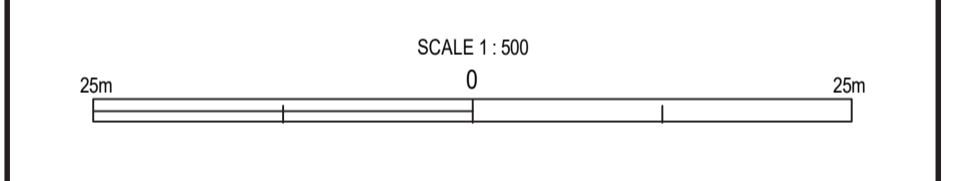
A'



NOTES

1. This drawing should be read in conjunction with:

- Works Plans (Document reference 2.3, DCO Volume 2)
- Design Principles Document (Document reference 5.11, DCO Volume 5)
- Outline Landscape and Ecology Management Plan (Document reference 7.5, DCO Volume 7)



DATE	ORIG	CHKD	REVD	APPR	REV	STS	REASON FOR ISSUE
01/05/26					P01.5		Draft 5 issue
31/03/26					P01.4		Draft 4 issue
04/11/25					P01.3		Draft 3 issue
15/07/25					P01.2		Draft 2 issue
14/04/25					P01.1		Draft 1 issue

THIS DRAWING IS ISSUED BY SOUTHERN WATER SUBJECT TO THE CONDITIONS THAT IT IS NOT COPIED EITHER IN WHOLE OR IN PART OR DISCLOSED TO THIRD PARTIES UNLESS PRIOR WRITTEN AUTHORISATION IS GIVEN BY SOUTHERN WATER. PREVIOUS VERSIONS OF THIS DRAWING SHOULD BE STAMPED SUPERSEDED OR DESTROYED. DO NOT SCALE THIS DRAWING - IF IN DOUBT ASK.

WATER for LIFE from Southern Water.

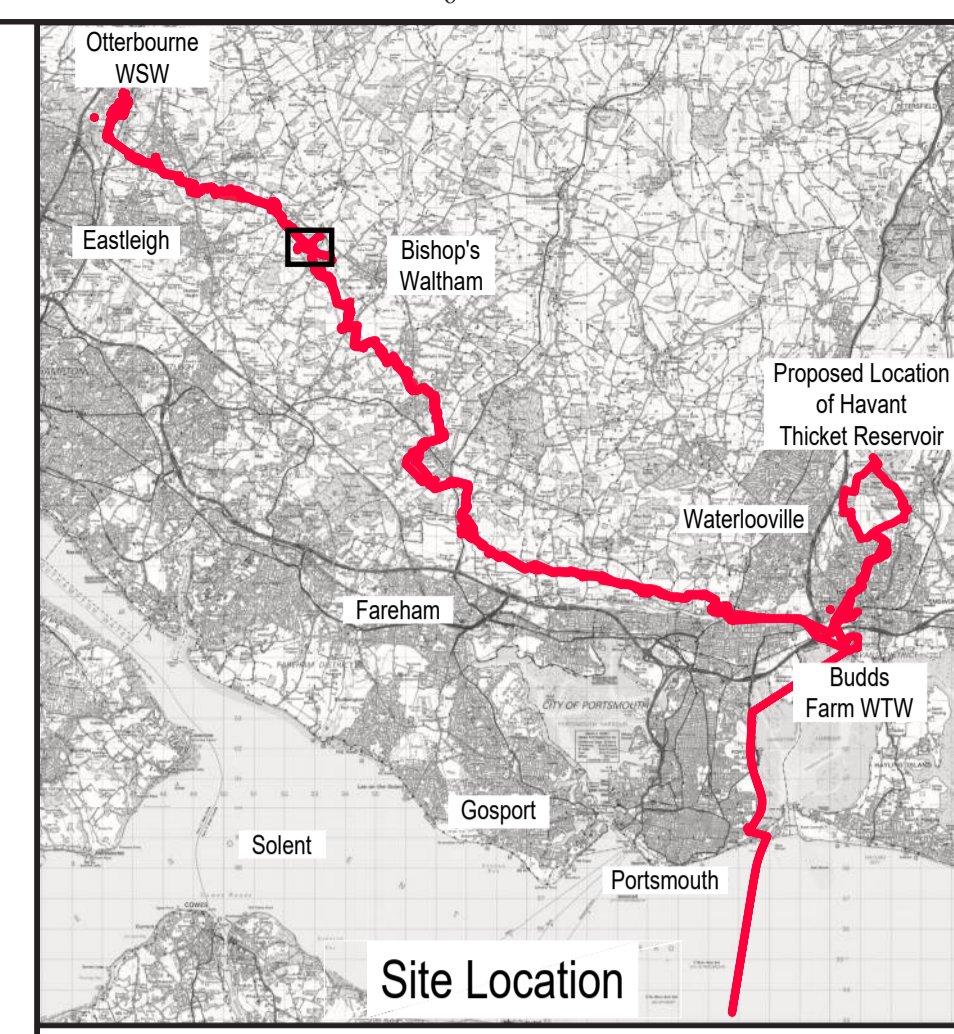
Southern House
Yeoman Road
Worthing
West Sussex
BN13 3NK
Telephone: (01903) 264444
Fax: (01903) 691435

PROJECT TITLE
HAMPSHIRE WATER TRANSFER AND WATER RECYCLING PROJECT

DRAWING TITLE
**INDICATIVE ENVIRONMENTAL MASTERPLAN
FIGURE 3 - INDICATIVE ABOVE GROUND PLANT
LANDSCAPE PLANS
BREAK PRESSURE TANK K - PLAN
SHEET 1 OF 2**

SITE UNIT MEMORIC	SITE UNIT NO.	MASTER SIZE
PRN 710166	SCALE 1:500	A1
S.W. DRAWING NO.	REVISION	P01.5

- Indicative Pipeline location
- Environmental Mitigation and Enhancement Area
- Limits of Deviation for Above Ground Plant
- Order Limits
- Existing tree
- Existing vegetation
- Fence
- Woodland planting
- Hedgerow enhancement and creation
- Hedgerow reinstatement
- Scrub
- Tree
- SuDS basin
- SuDS swale
- Overhead powerline
- Utility easement
- Biodiverse wildflower verge
- Green wall
- Neutral grassland

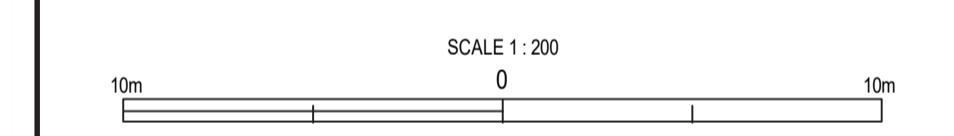
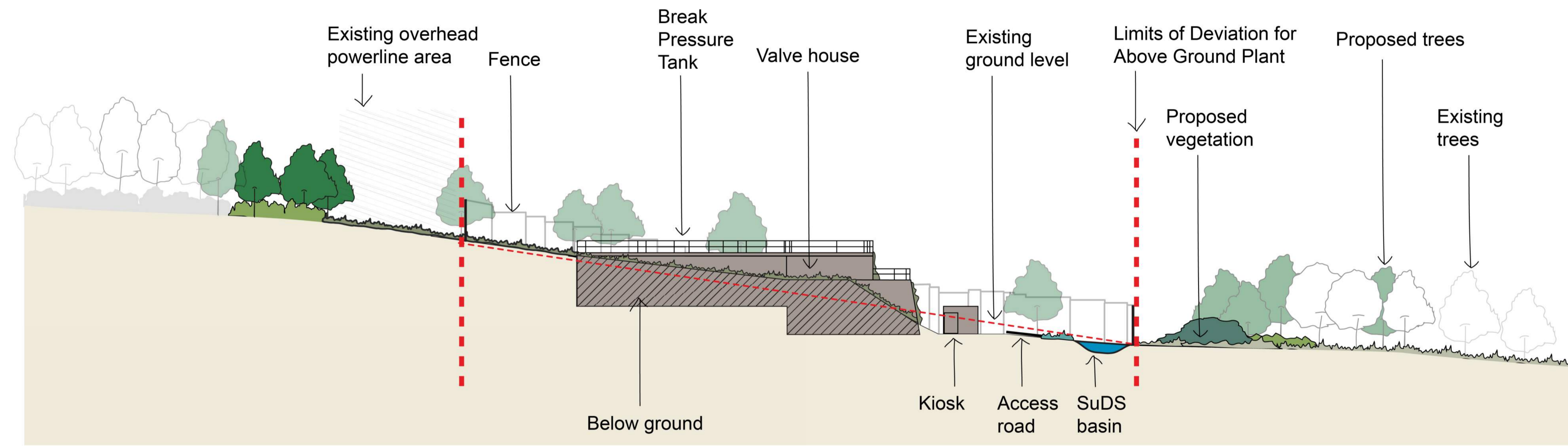


Site Location

SCALE 1 : 250,000

NOTES

1. This drawing should be read in conjunction with:
- Works Plans (Document reference 2.3, DCO Volume 2)
 - Design Principles Document (Document reference 5.11, DCO Volume 5)
 - Outline Landscape and Ecology Management Plan (Document reference 7.5, DCO Volume 7)



DATE	ORIG	CHKD	REVD	APPR	REV	STS	REASON FOR ISSUE
01/05/26					P01.5		Draft 5 issue
31/03/26					P01.4		Draft 4 issue
04/11/25					P01.3		Draft 3 issue
15/07/25					P01.2		Draft 2 issue
14/04/25	---	---	---	---	P01.1		Draft 1 issue

THIS DRAWING IS ISSUED BY SOUTHERN WATER SUBJECT TO THE CONDITIONS THAT IT IS NOT COPIED EITHER IN WHOLE OR IN PART OR DISCLOSED TO THIRD PARTIES UNLESS PRIOR WRITTEN AUTHORISATION IS GIVEN BY SOUTHERN WATER. PREVIOUS VERSIONS OF THIS DRAWING SHOULD BE STAMPED SUPERSEDED OR DESTROYED. DO NOT SCALE THIS DRAWING - IF IN DOUBT ASK

Southern House
Yeoman Road
Worthing
West Sussex
BN13 3NK
Telephone: (01903) 264444
fax: (01903) 691435

PROJECT TITLE
HAMPSHIRE WATER TRANSFER AND WATER RECYCLING PROJECT

DRAWING TITLE
**INDICATIVE ENVIRONMENTAL MASTERPLAN
FIGURE 3 - INDICATIVE ABOVE GROUND PLANT
LANDSCAPE PLANS**
**BREAK PRESSURE TANK K - ELEVATION
SHEET 2 OF 2**

SITE UNIT MNEMONIC	SITE UNIT NO.	MASTER SIZE
PRN 710166	SCALE 1:200	A1
S.W. DRAWING NO.		REVISION P01.5



from
Southern
Water. 

The Southern Water logo graphic consists of three stylized, white, wavy lines that resemble water or a wave, positioned to the right of the word 'Water'.